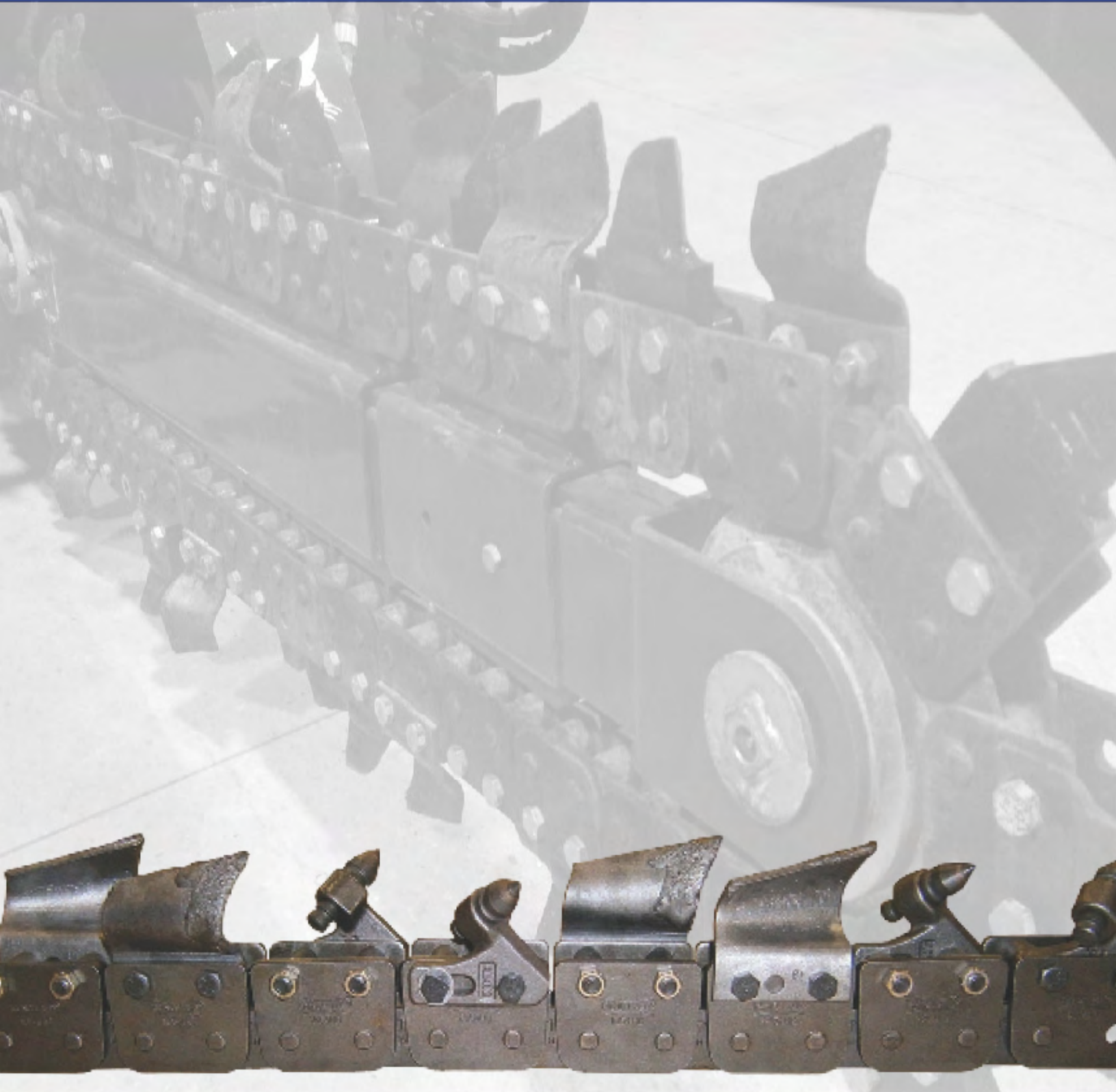


BALLANTINE

Bobcat® LT303

Trencher Replacement Parts



American Made.
American Strong.™

www.ballantineinc.com

Faster Service
Better Quality
Lower Prices

Replacement Parts for Bobcat® Trencher Attachments

Bobcat® is a registered trade mark of Bobcat Company.

All manufacturers' names, numbers, symbols and descriptions are used for reference purposes only and it is not implied that any parts listed are the products of the manufacturers.

Main Office

840 McKinley Street
Anoka, Minnesota 55303

Branch Office

675 Wesleyan Drive South West
Atlanta, Georgia 30336

Branch Office

2209 S. Lilac Ave.
Rialto, California 92316

Call Toll Free To Inside Sales

1/800/328/2424

FAX 1-763-427-2277

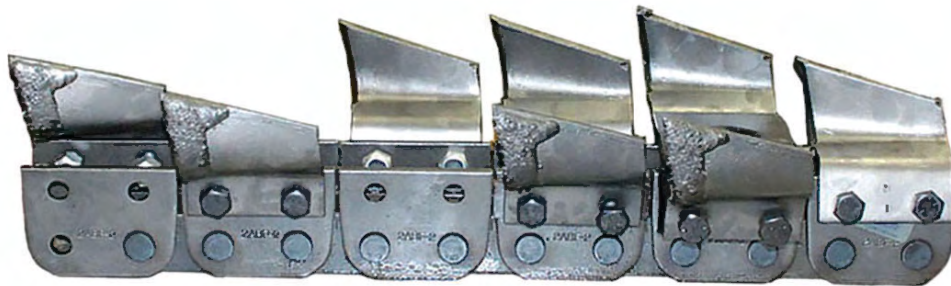
Email: parts@ballantineinc.com

www.ballantineinc.com



Bare Chain 2" Pitch Anti Back Flex

Ballantine Part No.	Dig Depth	Description
B2ABF00B30	36"	Bare Chain 30 Station
B2ABF00B35	48"	Bare Chain 35 Station

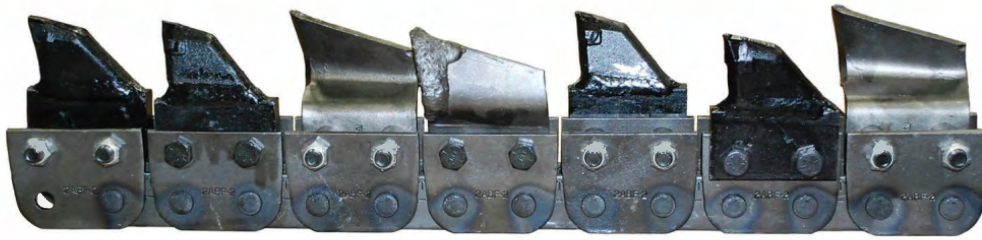


Cup Cutter Assemblies

Ballantine Part No.	Dig Depth	Description
B2ABF06C30	36"	Cup Cutter Assembly 6" Cut 30 Station
B2ABF06C35	48"	Cup Cutter Assembly 6" Cut 35 Station

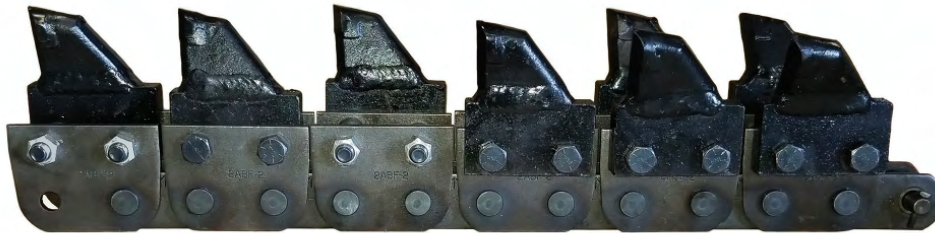
Wider Cutting Widths Available Upon Request

Bobcat® LT303 Attachment



Terminator & Cup Combination Assemblies

Ballantine Part No.	Dig Depth	Description
T2ABF06M30	36"	1/2 Terminator & 1/2 Cup 6" 30 Station
T2ABF06M35	48"	1/2 Terminator & 1/2 Cup 6" 35 Station
Wider Cutting Widths Available Upon Request		



Bolt On Terminator Assemblies

Ballantine Part No.	Dig Depth	Description
T2ABF0630	36"	Terminator Bolt On 6" Cut 30 Station
T2ABF0635	48"	Terminator Bolt On 6" Cut 35 Station
Wider Cutting Widths Available Upon Request		



Terminator Chains

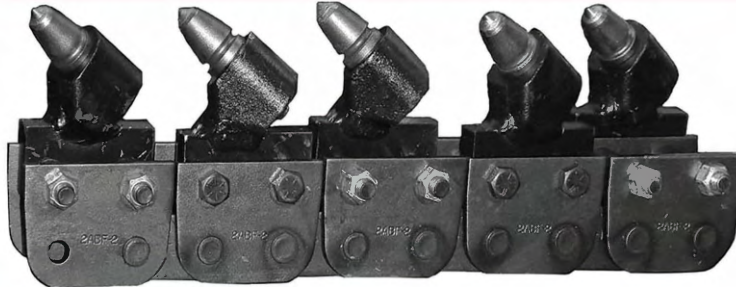
Ballantine Part No.	Dig Depth	Description
SH20000630	36"	Welded Terminator 6" Cut 30 Station
SH20000635	48"	Welded Terminator 6" Cut 35 Station

Bobcat® LT303 Attachment



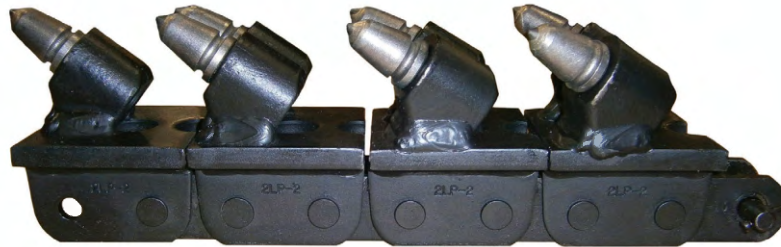
Rock & Cup Combination Assemblies

Ballantine Part No.	Dig Depth	Description
B2ABF06M30	36"	1/2 Carbide & 1/2 Cup 6" Cut 30 Station
B2ABF06M35	48"	1/2 Carbide & 1/2 Cup 6" Cut 35 Station
Wider Cutting Widths Available Upon Request		



Bolt On Rock & Frost Assemblies

Ballantine Part No.	Dig Depth	Description
B2ABF06R30	36"	Rock & Frost Assembly 6" Cut 30 Station
B2ABF06R35	48"	Rock & Frost Assembly 6" Cut 35 Station
Wider Cutting Widths Available Upon Request		



Alligator Chains

Ballantine Part No.	Dig Depth	Description
AL200006D30	36"	Welded Alligator Chain 6" Cut 30 Station
AL200006D35	48"	Welded Alligator Chain 6" Cut 35 Station
Wider Cutting Widths Available Upon Request		

Bobcat® LT303 Attachment

Chain Repair Components For 2" Pitch Anti Back Flex



Ballantine Part No.	OEM Part Number	Description
B2ABF00B01	N/A	Chain Repair Section Anti Back Flex



Ballantine Part No.	OEM Part Number	Description
B135351	N/A	Connecting Pin & Keeper



Ballantine Part No.	OEM Part Number	Description
B135358	N/A	"T" Head Keeper

Cup Cutters



Ballantine Part No.	OEM Part Number	Description
6634414	6634414	Cup Cutter Right Hand



Ballantine Part No.	OEM Part Number	Description
6634415	6634415	Cup Cutter Left Hand



Ballantine Part No.	OEM Part Number	Description
B135502	N/A	Ground Breaker Right Hand



Ballantine Part No.	OEM Part Number	Description
B135501	N/A	Ground Breaker Left Hand

Terminator Adapters



Ballantine Part No.	OEM Part Number	Description
T20004R	N/A	Terminator Adapter Right Hand - C.C. - 4" Cut



Ballantine Part No.	OEM Part Number	Description
T20004L	N/A	Terminator Adapter Left Hand -C.C. - 4" Cut



Ballantine Part No.	OEM Part Number	Description
T20005R	N/A	Terminator Adapter Right Hand - 5" Cut



Ballantine Part No.	OEM Part Number	Description
T20005L	N/A	Terminator Adapter Left Hand - 5" Cut



Ballantine Part No.	OEM Part Number	Description
T20006R	N/A	Terminator Adapter Right Hand - 6" Cut



Ballantine Part No.	OEM Part Number	Description
T20006L	N/A	Terminator Adapter Left Hand - 6" Cut



Ballantine Part No.	OEM Part Number	Description
T20000S	N/A	Terminator Adapter Straight Cut

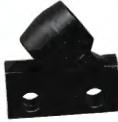
Bobcat® LT303 Attachment

Chain Repair Components For 2" Pitch Anti Back Flex

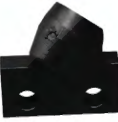
Rock & Frost Adapters



Ballantine Part No.	OEM Part Number	Description
B136036	N/A	Rock & Frost Adapter Right Hand - C.C. - 4" Cut



Ballantine Part No.	OEM Part Number	Description
B136037	N/A	Rock & Frost Adapter Left Hand -C.C. - 4" Cut



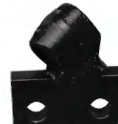
Ballantine Part No.	OEM Part Number	Description
B136038	N/A	Rock & Frost Adapter Left Hand - 5" Cut



Ballantine Part No.	OEM Part Number	Description
B136039	N/A	Rock & Frost Adapter Right Hand - 5" Cut



Ballantine Part No.	OEM Part Number	Description
B136040	N/A	Rock & Frost Adapter Right Hand - 6" Cut



Ballantine Part No.	OEM Part Number	Description
B136041	N/A	Rock & Frost Adapter Left Hand - 6" Cut



Ballantine Part No.	OEM Part Number	Description
765CRFN	N/A	Carbide Bit - Full Cap - Includes Clip



Ballantine Part No.	OEM Part Number	Description
K91	N/A	Separate Clip



Ballantine Part No.	OEM Part Number	Description
765HB	N/A	Carbide Bit - Rock Buster



Ballantine Part No.	OEM Part Number	Description
765CB	N/A	Carbide Bit - Full Cap

Bobcat® LT303 Attachment

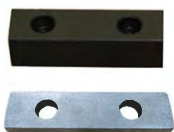
Chain Components For 2" Pitch Anti Back Flex

Adapters



Ballantine Part No.	OEM Part Number	Description
B135912	N/A	Adapter For 8" Cut
Ballantine Part No.	OEM Part Number	Description
B135950	N/A	Adapter For 10" Cut
Ballantine Part No.	OEM Part Number	Description
B135913	N/A	Adapter For 12" Cut

Flat Spacers



Ballantine Part No.	OEM Part Number	Description
6573375	N/A	Flat Spacer 1" Thick
Ballantine Part No.	OEM Part Number	Description
V30	N/A	Flat Space 5/16" Thick

Tube Spacers



Ballantine Part No.	OEM Part Number	Description
B135952	N/A	Tube Spacer Outside Mounting
Ballantine Part No.	OEM Part Number	Description
B135951	N/A	Tube Spacer Cup Mounted Inside
Ballantine Part No.	OEM Part Number	Description
B135043S	N/A	Tube Spacer Rock & Frost Or Terminator Inside Mounting

Bolts



Ballantine Part No.	OEM Part Number	Description
12201148	N/A	Bolt 1/2" X 20 X 1 1/4" Grade 8
Ballantine Part No.	OEM Part Number	Description
12202148	N/A	Bolt 1/2" X 20 X 2 1/4" Grade 8
Ballantine Part No.	OEM Part Number	Description
12202128	N/A	Bolt 1/2" X 20 X 2 1/2" Grade 8
Ballantine Part No.	OEM Part Number	Description
122038	N/A	Bolt 1/2" X 20 X 3" Grade 8
Ballantine Part No.	OEM Part Number	Description
12203148	N/A	Bolt 1/2" X 20 X 3 1/4" Grade 8
Ballantine Part No.	OEM Part Number	Description
12203128	N/A	Bolt 1/2" X 20 X 3 1/2" Grade 8
Ballantine Part No.	OEM Part Number	Description
12203348	N/A	Bolt 1/2" X 20 X 3 3/4" Grade 8
Ballantine Part No.	OEM Part Number	Description
122048	N/A	Bolt 1/2" X 20 X 4" Grade 8
Ballantine Part No.	OEM Part Number	Description
12204128	N/A	Bolt 1/2" X 20 X 4 1/2" Grade 8
Ballantine Part No.	OEM Part Number	Description
1220	N/A	Lock Nut 1/2" X 20

Bobcat® LT303 Chain Components For 2" Pitch Anti Back Flex

Sprocket



Ballantine Part No.	OEM Part Number	Description
6806486	6806486	Drive Sprocket Solid 13 Tooth

Boom Components



Ballantine Part No.	OEM Part Number	Description
6959094	6959094	Boom End Roller*



Ballantine Part No.	OEM Part Number	Description
6959094A	6959094A	Boom End Roller Assembly <i>(Includes all items with an asterisk *)</i>



Ballantine Part No.	OEM Part Number	Description
6659352	6659352	Bearing Square Hole (2 Required) *



Ballantine Part No.	OEM Part Number	Description
6703305	6703305	Dirt Shield (2 Required)*



Ballantine Part No.	OEM Part Number	Description
6703308	6703308	Idler Shaft



Ballantine Part No.	OEM Part Number	Description
12131	35C000816B	Idler Shaft Bolt



Ballantine Part No.	OEM Part Number	Description
12FW	6675521	Idler Shaft Washer

BALLANTINE

Ground Engaging Parts Specialists

Corporate Headquarters: 840 McKinley Street, Anoka, MN 55303
Warehouse: 9647 Sante Fe Springs Rd., Sante Fe Springs, CA 90680
Warehouse: 675 Wesleyan Drive SW, Atlanta, GA 30336

www.ballantineinc.com

phone: 800-328-2424 • fax 763-427-2277 • parts@ballantineinc.com

©2016 U.S. Tsubaki Power Transmission, LLC. All Rights Reserved
Printed in the U.S.A. 05/17