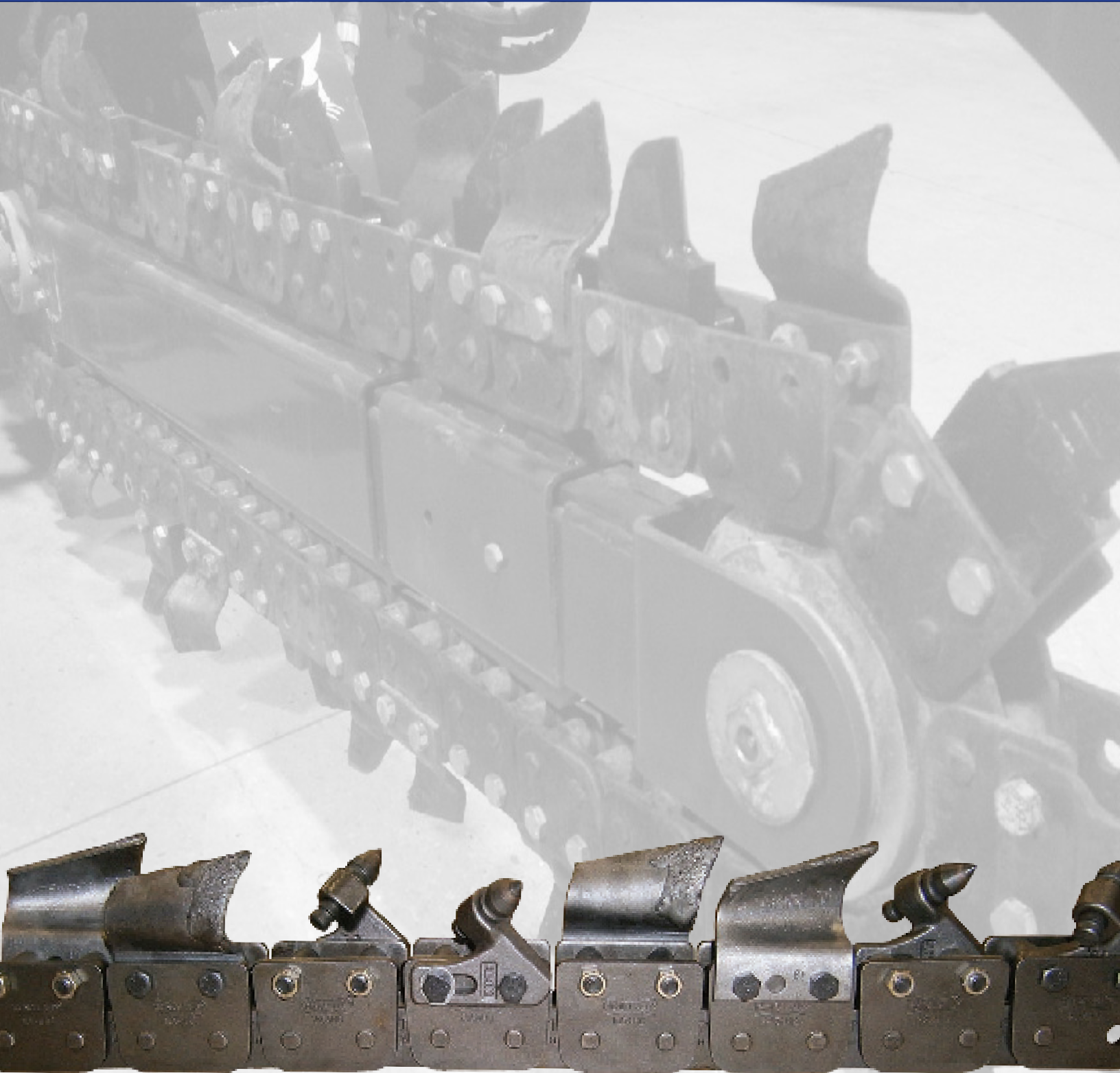


**BALLANTINE**

**Bobcat® LT204**

Trencher Replacement Parts



American Made.  
American Strong.™

[www.ballantineinc.com](http://www.ballantineinc.com)

Faster Service  
Better Quality  
Lower Prices

## Replacement Parts for Bobcat® Trencher Attachments

Bobcat® is a registered trade mark of Bobcat Company.

All manufacturers' names, numbers, symbols and descriptions are used for reference purposes only and it is not implied that any parts listed are the products of the manufacturers.

### Main Office

840 McKinley Street  
Anoka, Minnesota 55303

### Branch Office

675 Wesleyan Drive South West  
Atlanta, Georgia 30336

### Branch Office

2209 S. Lilac Ave.  
Rialto, California 92316

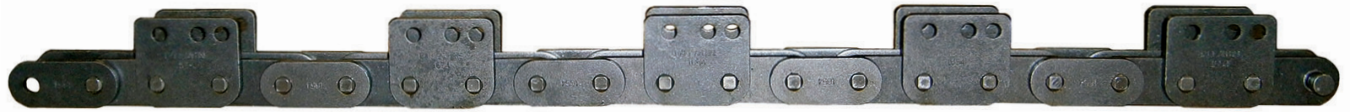
Call Toll Free To Inside Sales

1/800/328/2424

FAX 1-763-427-2277

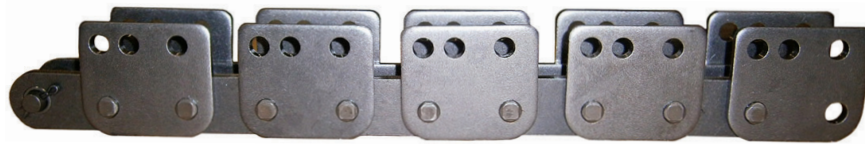
Email: [parts@ballantineinc.com](mailto:parts@ballantineinc.com)

[www.ballantineinc.com](http://www.ballantineinc.com)



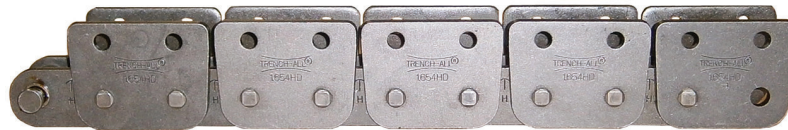
### Bare Chain 1.654" Pitch Every 4th

Ballantine Part No.	Dig Depth	Description
ZB1640400B13	24"	Bare Chain 13 Station
ZB1640400B17	36"	Bare Chain 17 Station



### Bare Chain 1.654" Pitch Every 2nd

Ballantine Part No.	Dig Depth	Description
ZB1640200B25	24"	Bare Chain 26 Station
ZB1640200B33	36"	Bare Chain 34 Station
ZB1640200B41	48"	Bare Chain 41 Station



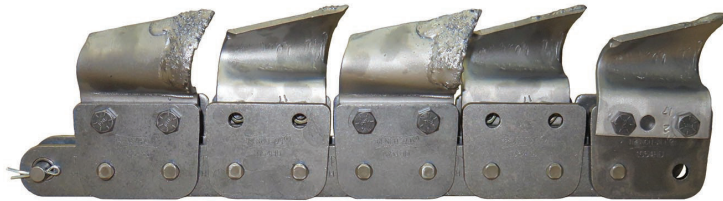
### Bare Chain 1.654" Pitch Heavy Duty Anti Back Flex

Ballantine Part No.	Dig Depth	Description
TA1654HD00B25	24"	Bare Chain 26 Station
TA1654HD00B33	36"	Bare Chain 34 Station
TA1654HD00B41	48"	Bare Chain 41 Station



### Cup Cutter Assemblies 1.654" Pitch Every 2nd

Ballantine Part No.	Dig Depth	Description
M564042C25	24"	Cup Cutter Assembly 4" Cut 25 Station
M564042C33	36"	Cup Cutter Assembly 4" Cut 33 Station
M564062C25	24"	Cup Cutter Assembly 6" Cut 25 Station
M564062C33	36"	Cup Cutter Assembly 6" Cut 33 Station
M564062C41	48"	Cup Cutter Assembly 6" Cut 41 Station
Wider Cutting Widths Available Upon Request		



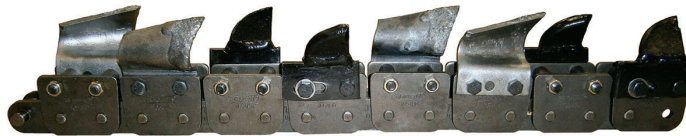
### Anti Back Flex Cup Cutter Assemblies, 1.654" Every Second

Ballantine Part No.	Dig Depth	Description
M1654HD042C25	24"	Cup Cutter Assembly 4" Cut 25 Station
M1654HD042C33	36"	Cup Cutter Assembly 4" Cut 33 Station
M1654HD062C25	24"	Cup Cutter Assembly 6" Cut 25 Station
M1654HD062C33	36"	Cup Cutter Assembly 6" Cut 33 Station
Wider Cutting Widths Available Upon Request		



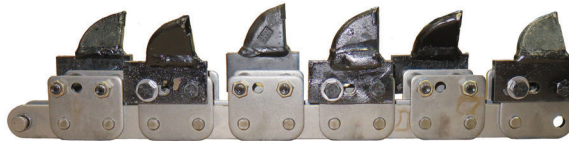
### Terminator & Cup Combination Assemblies, 1.654" Every 2nd

Ballantine Part No.	Dig Depth	Description
ZB164042TM25	24"	1/2 Terminator & 1/2 Cup 4" Cut 25 Station
ZB164042TM33	36"	1/2 Terminator & 1/2 Cup 4" Cut 33 Station
ZB164042TM41	48"	1/2 Terminator & 1/2 Cup 4" Cut 41 Station
ZB164062TM25	24"	1/2 Terminator & 1/2 Cup 6" Cut 24 Station
ZB164062TM33	36"	1/2 Terminator & 1/2 Cup 6" Cut 33 Station
ZB164062TM41	48"	1/2 Terminator & 1/2 Cup 6" Cut 41 Station
Wider Cutting Widths Available Upon Request		



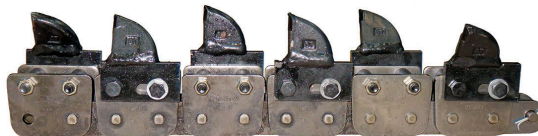
### Heavy Duty Anti Back Flex Terminator & Cup Combination Assemblies, 1.654" Every 2nd

Ballantine Part No.	Dig Depth	Description
TA1654HD042M25	24"	1/2 Terminator & 1/2 Cup 4" Cut 25 Station
TA1654HD042M33	36"	1/2 Terminator & 1/2 Cup 4" Cut 33 Station
TA1654HD042M41	48"	1/2 Terminator & 1/2 Cup 4" Cut 41 Station
TA1654HD062M25	24"	1/2 Terminator & 1/2 Cup 6" Cut 25 Station
TA1654HD062M33	36"	1/2 Terminator & 1/2 Cup 6" Cut 33 Station
TA1654HD062M41	48"	1/2 Terminator & 1/2 Cup 6" Cut 41 Station
Wider Cutting Widths Available Upon Request		



### Bolt On Terminator Assemblies, 1.654" Every 2nd

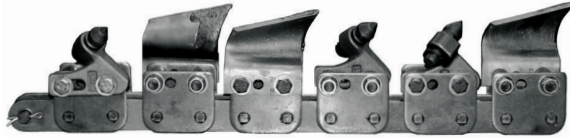
Ballantine Part No.	Dig Depth	Description
ZB164042T25	24"	Terminator Bolt On 4" Cut 25 Station
ZB164042T33	36"	Terminator Bolt On 4" Cut 26 Station
ZB164042T41	48"	Terminator Bolt On 4" Cut 41 Station
ZB164062T25	24"	Terminator Bolt On 6" Cut 25 Station
ZB164062T33	36"	Terminator Bolt On 6" Cut 33 Station
ZB164062T41	48"	Terminator Bolt On 6" Cut 41 Station
Wider Cutting Widths Available Upon Request		



### Heavy Duty Anti Back Flex Bolt On Terminator Assemblies, 1.654" Every 2nd

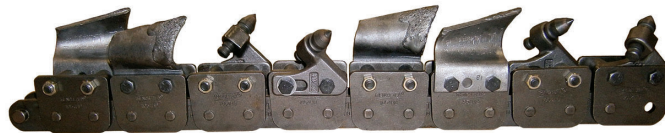
Ballantine Part No.	Dig Depth	Description
T1654HD042T25	24"	Terminator Bolt On 4" Cut 25 Station
T1654HD042T33	36"	Terminator Bolt On 4" Cut 33 Station
T1654HD042T41	48"	Terminator Bolt On 4" Cut 41 Station
T1654HD062T25	24"	Terminator Bolt On 6" Cut 25 Station
T1654HD062T33	36"	Terminator Bolt On 6" Cut 33 Station
T1654HD062T41	48"	Terminator Bolt On 6" Cut 41 Station
Wider Cutting Widths Available Upon Request		

## Bobcat® LT204 Attachment



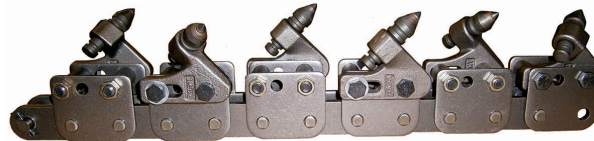
### Rock & Cup Combination Assemblies, 1.654" Every 2nd

Ballantine Part No.	Dig Depth	Description
ZB164042RM25	24"	1/2 Carbide & 1/2 Cup 4" Cut 25 Station
ZB164042RM33	36"	1/2 Carbide & 1/2 Cup 4" Cut 33 Station
ZB164042RM41	48"	1/2 Carbide & 1/2 Cup 4" Cut 41 Station
ZB164062RM25	24"	1/2 Carbide & 1/2 Cup 6" Cut 25 Station
ZB164062RM33	36"	1/2 Carbide & 1/2 Cup 6" Cut 33 Station
ZB164062RM41	48"	1/2 Carbide & 1/2 Cup 6" Cut 41 Station
Wider Cutting Widths Available Upon Request		



### Heavy Duty Anti Back Flex Rock & Cup Combination Assemblies, 1.654" Every 2nd

Ballantine Part No.	Dig Depth	Description
TA1654HD042M25	24"	1/2 Carbide & 1/2 Cup 4" Cut 25 Station
TA1654HD042M33	36"	1/2 Carbide & 1/2 Cup 4" Cut 33 Station
TA1654HD042M41	48"	1/2 Carbide & 1/2 Cup 4" Cut 41 Station
TA1654HD062M25	24"	1/2 Carbide & 1/2 Cup 6" Cut 25 Station
TA1654HD062M33	36"	1/2 Carbide & 1/2 Cup 6" Cut 33 Station
TA1654HD062M41	48"	1/2 Carbide & 1/2 Cup 6" Cut 41 Station
Wider Cutting Widths Available Upon Request		



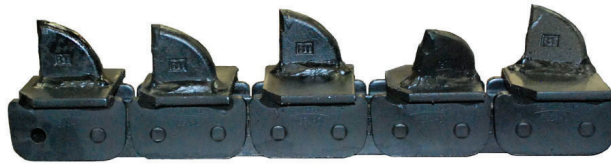
### Rock & Frost Assemblies, 1.654" Every 2nd

Ballantine Part No.	Dig Depth	Description
ZB164042R25	24"	Rock & Frost Assembly 4" Cut 25 Station
ZB164042R33	36"	Rock & Frost Assembly 4" Cut 33 Station
ZB164042R41	48"	Rock & Frost Assembly 4" Cut 41 Station
ZB164062R25	24"	Rock & Frost Assembly 6" Cut 25 Station
ZB164062R33	36"	Rock & Frost Assembly 6" Cut 33 Station
ZB164062R41	36"	Rock & Frost Assembly 6" Cut 33 Station
Wider Cutting Widths Available Upon Request		



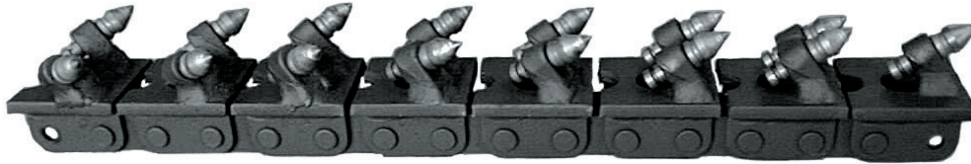
### Heavy Duty Anti Back Flex Rock & Frost Assemblies, 1.654" Every 2nd

Ballantine Part No.	Dig Depth	Description
TA1654HD042R25	24"	Rock & Frost Assembly 4" Cut 25 Station
TA1654HD042R33	36"	Rock & Frost Assembly 4" Cut 33 Station
TA1654HD042R41	48"	Rock & Frost Assembly 4" Cut 41 Station
TA1654HD062R25	24"	Rock & Frost Assembly 6" Cut 25 Station
TA1654HD062R33	36"	Rock & Frost Assembly 6" Cut 33 Station
TA1654HD062R41	48"	Rock & Frost Assembly 6" Cut 41 Station
Wider Cutting Widths Available Upon Request		



### Heavy Duty Anti Back Flex Terminator Chain

Ballantine Part No.	Dig Depth	Description
SH165404S25	24"	Terminator Chain 4" Cut 25 Station
SH165404S33	36"	Terminator Chain 4" Cut 33 Station
SH165404S41	48"	Terminator Chain 4" Cut 41 Station
SH165406S25	24"	Terminator Chain 6" Cut 25 Station
SH165406S33	36"	Terminator Chain 6" Cut 33 Station
SH165406S41	48"	Terminator Chain 6" Cut 41 Station
Wider Cutting Widths Available Upon Request		







### Heavy Duty Anti Back Flex Alligator Chain

Ballantine Part No.	Dig Depth	Description
AL16540425	24"	Alligator Chain 4" Cut 25 Station
AL16540433	36"	Alligator Chain 4" Cut 33 Station
AL16540441	48"	Alligator Chain 4" Cut 41 Station
AL16540625	24"	Alligator Chain 6" Cut 25 Station
AL16540633	36"	Alligator Chain 6" Cut 33 Station
AL16540641	48"	Alligator Chain 6" Cut 41 Station
Wider Cutting Widths Available Upon Request		


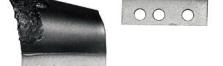
## Bobcat® LT204 Attachment

### Chain Componets For 1.654 Every 2nd And Heavy Duty Anti Back Flex


#### Chain Repair Components

	Ballantine Part No.	OEM Part Number	Description
	B208454	N/A	Connecting Pin & Keeper
	Ballantine Part No.	OEM Part Number	Description
	B135007	N/A	Cotter Pin
	Ballantine Part No.	OEM Part Number	Description
	ZB1640200B01	N/A	Chain Repair Section Every Second
	Ballantine Part No.	OEM Part Number	Description
	TA1654HD00B01	N/A	Heavy Duty Anti Back Flex Chain Repair Section Every Second


#### Cup Cutters

	Ballantine Part No.	OEM Part Number	Description
	6655759	6655759	Cup Cutter Right Hand
	Ballantine Part No.	OEM Part Number	Description
	6655760	6655760	Cup Cutter Left Hand

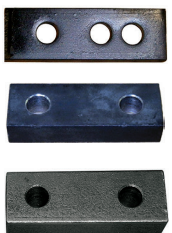
#### Terminators

	Ballantine Part No.	OEM Part Number	Description
	T165404R	N/A	Terminator Adapter Right Hand
	Ballantine Part No.	OEM Part Number	Description
T165404L	N/A	Terminator Adapter Left Hand	
Ballantine Part No.	OEM Part Number	Description	
T165404C	N/A	Terminatr Adapter Straight Cut	

#### Rock & Frost

	Ballantine Part No.	OEM Part Number	Description
	B135318	N/A	Rock & Frost Adapter Right Hand
	Ballantine Part No.	OEM Part Number	Description
	B135317	N/A	Rock & Frost Adapter Left Hand
	Ballantine Part No.	OEM Part Number	Description
	B135316	N/A	Rock & Frost Adapter Straight Cut
Ballantine Part No.	OEM Part Number	Description	
B17	N/A	Carbide Bit With Clip	
Ballantine Part No.	OEM Part Number	Description	
B17D	N/A	Clip	

#### Flat Spacers

	Ballantine Part No.	OEM Part Number	Description
	B208355	N/A	Flat Spacer 5/16" Thick
	Ballantine Part No.	OEM Part Number	Description
BL1654-5	N/A	Flat Spacer 1/2" Thick	
Ballantine Part No.	OEM Part Number	Description	
BL1654-6	N/A	Flat Spacer 1" Thick	

## Bobcat® LT204 Attachment

### Chain Components For 1.654 Every 2nd And Heavy Duty Anti Back Flex

#### Adapters For 1.654" Pitch Every 4th And Every 2nd



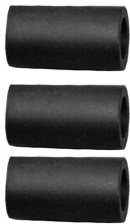
Ballantine Part No.	OEM Part Number	Description
B208439	N/A	Adapter For 8" Cut
Ballantine Part No.	OEM Part Number	Description
B208477	N/A	Adapter For 10" Cut
Ballantine Part No.	OEM Part Number	Description
B564781	N/A	Adapter For 12" Cut

#### Adapters For 1.654" Pitch Heavy Duty Anti Back Flex



Ballantine Part No.	OEM Part Number	Description
PL1654HD8	N/A	Adapter For 8" Cut
Ballantine Part No.	OEM Part Number	Description
PL1654HD10	N/A	Adapter For 10" Cut
Ballantine Part No.	OEM Part Number	Description
PL1654HD12	N/A	Adapter For 12" Cut

#### Tube Spacers



Ballantine Part No.	OEM Part Number	Description
B138009	N/A	Tube Spacer For Outside Mounting
Ballantine Part No.	OEM Part Number	Description
B138010	N/A	Tube Spacer Rock & Frost Mounted Inside
Ballantine Part No.	OEM Part Number	Description
B136032S	N/A	Tube Spacer Cup Cutter Mounted Inside

#### Bolts



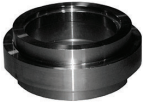
Ballantine Part No.	OEM Part Number	Description
3824788	N/A	Bolt 3/8" X 24 X 7/8" Grade 8
Ballantine Part No.	OEM Part Number	Description
38241148	N/A	Bolt 3/8" X 24 X 1 1/4" Grade 8
Ballantine Part No.	OEM Part Number	Description
38242148	N/A	Bolt 3/8" X 24 X 2 1/4" Grade 8
Ballantine Part No.	OEM Part Number	Description
38242128	N/A	Bolt 3/8" X 24 X 2 1/2" Grade 8
Ballantine Part No.	OEM Part Number	Description
38242348	N/A	Bolt 3/8" X 24 X 2 3/4" Grade 8
Ballantine Part No.	OEM Part Number	Description
382438	N/A	Bolt 3/8" X 24 X 3" Grade 8
Ballantine Part No.	OEM Part Number	Description
38243148	N/A	Bolt 3/8" X 24 X 3 1/4" Grade 8
Ballantine Part No.	OEM Part Number	Description
38243128	N/A	Bolt 3/8" X 24 X 3 1/2" Grade 8
Ballantine Part No.	OEM Part Number	Description
3824	N/A	Lock Nut 3/8" X 24
Ballantine Part No.	OEM Part Number	Description
382S	N/A	Flat Washer

### Sprocket

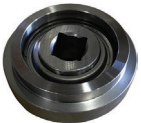


Ballantine Part No.	OEM Part Number	Description
6705174	6705174	Drive Sprocket Solid 11 Tooth

### Boom Components



Ballantine Part No.	OEM Part Number	Description
6577026	6577026	Boom End Roller



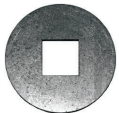
Ballantine Part No.	OEM Part Number	Description
6577026A	N/A	Boom End Roller Assembly



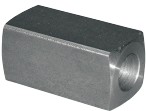
Ballantine Part No.	OEM Part Number	Description
6576140	6576140	Bearing Square Hole



Ballantine Part No.	OEM Part Number	Description
6645545	6645545	Snap Ring



Ballantine Part No.	OEM Part Number	Description
6577025	6577025	Dirt Shield (2 Required)



Ballantine Part No.	OEM Part Number	Description
6577011	6577011	Idler Shaft



Ballantine Part No.	OEM Part Number	Description
12131	35C000816B	Idler Shaft Bolt (2 Required)



Ballantine Part No.	OEM Part Number	Description
12FW	6675521	Idler Shaft Washer (2 Required)

# ***BALLANTINE***

Ground Engaging Parts Specialists

Corporate Headquarters: 840 McKinley Street, Anoka, MN 55303

Warehouse: 2209 South Lilac Ave., Rialto, CA 92316

Warehouse: 675 Wesleyan Drive SW, Atlanta, GA 30336

[www.ballantineinc.com](http://www.ballantineinc.com)

phone: 800-328-2424 • fax 763-427-2277 • [parts@ballantineinc.com](mailto:parts@ballantineinc.com)

©2016 U.S. Tsubaki Power Transmission, LLC. All Rights Reserved

Printed in the U.S.A. 05/17