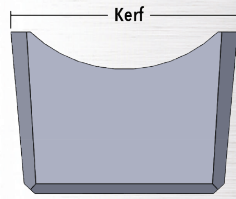
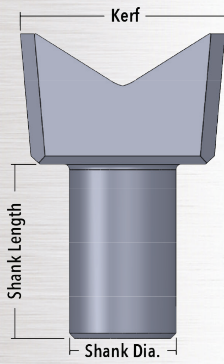


STEEL *CONCAVE STYLE*

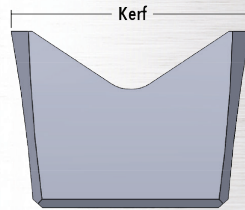


STEEL *CONCAVE STYLE*

| Ballantine part # | Replaces part # | Shank Style | Kerf | Shank Length | Shank Diameter | Bolt Size |
|-------------------|--------------------|-------------------------------|--------|--------------|----------------|-----------|
| B10205T | ▶ Quadco: Q10205T | No Shank | 2 1/4" | N/A | N/A | 1" NF |
| B10105T | ▶ Quadco: Q10105T | No Shank — 2-piece Compatible | 2 1/4" | N/A | 1 1/4" | 1/2" NF |
| BK10022T | ▶ Quadco: QK10022T | No Shank — 2-piece Compatible | 2 3/8" | N/A | 1.234" | 5/8" NF |
| BH10091T | ▶ Quadco: QH10091T | One Piece - Long Shank | 1 7/8" | 1 3/4" | 1" | 1/2" NF |
| | ▶ Deere: F452110 | | | | | |
| BT379815 | ▶ Deere: AT379815 | One Piece - Long Shank | 2.38" | 2" | 1.23" | 5/8" NF |
| | ▶ Deere: F452113 | | | | | |
| | ▶ Quadco: MIK404T | | | | | |

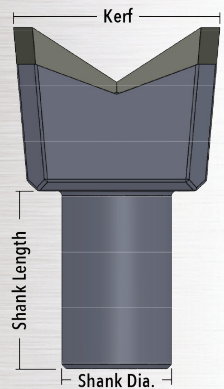


STEEL *BEAVER STYLE*

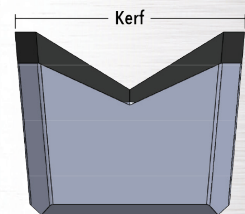


STEEL *BEAVER STYLE*

| Ballantine part # | Replaces part # | Shank Style | Kerf | Shank Length | Shank Diameter | Bolt Size |
|-------------------|--------------------|-------------------------------|---------|--------------|----------------|-----------|
| BH10103T | ▶ Quadco: QH10103T | No Shank | 2" | N/A | N/A | 3/4" NF |
| B10233T | ▶ Quadco: Q10233T | No Shank | 2 5/16" | N/A | N/A | 1" NF |
| | ▶ Gator: G23NS | | | | | |
| B11333T | ▶ Quadco: Q11333T | No Shank | 2 7/16" | N/A | N/A | 1" NF |
| | ▶ Gator: X25NS | | | | | |
| BH10096T | ▶ Quadco: QH10096T | No Shank - 2 piece Compatible | 2" | N/A | 1" | 1/2" NF |
| BK10031T | ▶ Quadco: QK10031T | No Shank - 2 piece Compatible | 2 3/8" | N/A | 1.234" | 5/8" NF |
| BH10150T | ▶ Quadco: QH10150T | One Piece - Long Shank | 2" | 1 1/2" | 1" | 1/2" NF |
| | ▶ Gator: G20S | | | | | |
| BH10078T | ▶ Quadco: QH10078T | One Piece - Short Shank | 2" | 3/4" | 1" | 1/2" NF |
| B10797T | ▶ Quadco: Q10797T | One Piece - Short Shank | 1 3/4" | 0.1" | 1" | 1/2" NF |
| B10150T | ▶ Quadco: Q10150T | One Piece - Short Shank | 2 1/4" | 0.938" | 1 1/4" | 1/2" NF |
| B10122T | ▶ Quadco: Q10122T | One Piece - Long Shank | 2 1/4" | 2" | 1 1/4" | 1/2" NF |
| BK10024T | ▶ Quadco: QK10024T | One Piece - Long Shank | 2 3/8" | 2" | 1.234" | 5/8" NF |
| | ▶ Gator: G24K | | | | | |



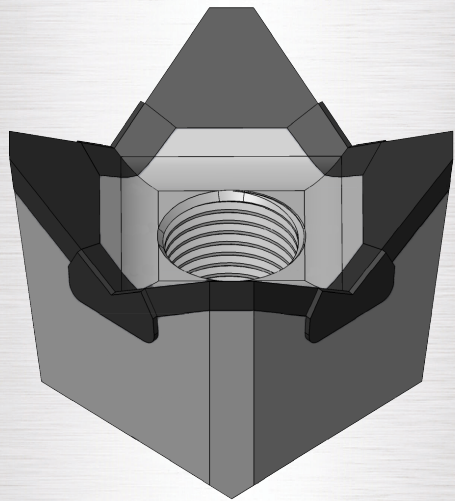
CARBIDE *BEAVER STYLE*



CARBIDE *BEAVER STYLE*

| | Replaces part # | Shank Style | Kerf | Shank Length | Shank Diameter | Bolt Size |
|--------------------------|-------------------------|------------------------|--------|--------------|----------------|-----------|
| BV4X4NSBG1 BV4X4NSTX2 | ▶ Quadco: QV4X4NSB-G1 | No Shank | 2 1/4" | N/A | N/A | 1" NF |
| | ▶ Quadco: QV4X4NR-11C | | | | | |
| BVH4X41BG1 | ▶ Gator: GC23NS | One Piece - Long Shank | 1 7/8" | 1 3/4" | 1" | 1/2" NF |
| | ▶ Quadco: QVH4X4-1B-G1 | | | | | |
| | ▶ Quadco: QVH4X4-1B-11C | | | | | |
| | ▶ Deere: F452111 | | | | | |
| BVK4X4BG1 BVK4X4TX2 | ▶ Gator: GC20S | One Piece - Long Shank | 2 3/8" | 2" | 1.234" | 5/8" NF |
| | ▶ Quadco: QVK4X4B-G1 | | | | | |
| | ▶ Quadco: QVK4X4B-11C | | | | | |
| | ▶ Deere: F452112 | | | | | |
| | ▶ Gator: GC24K | | | | | |

TERMINATOR. TX2

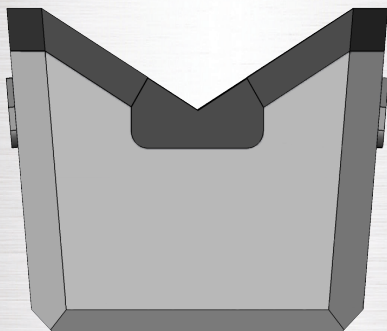


Ballantine's new **TX2** carbide design keeps you running in the most extreme conditions.

The patented design protects your disk in extreme sandy conditions.

Constructed using premium virgin carbide.

Available in shankless and wide kerf 1-piece shank.



All manufacturers' names, numbers, symbols and descriptions are used for reference purposes only, and it is not implied that any parts listed are the products of the manufacturers. Quado® is a registered trademark of Quado Equipment Inc. Deere® is a registered trademark of Deere & Company. Gator® is a registered trademark of Timberblade, Inc.

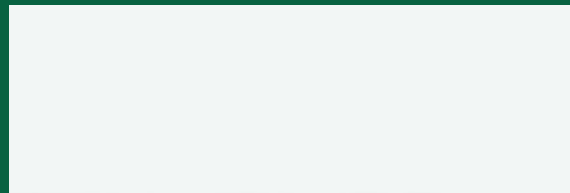
Hardware



| Ballantine part # | Bolt Head Style | Thread | Bolt Length |
|-------------------|-----------------|---------|-------------|
| 12202148 | Hex | 1/2" NF | 2-1/4" |
| 58182148 | Hex | 5/8" NF | 2-1/4" |
| B011614728 | Hex | 1" NF | 4-1/2" |
| B12267A450 | 12 Point | 1" NF | 4-1/2" |

Headquartered in Anoka, Minnesota, Ballantine has been manufacturing superior wear parts since 1959 and combines innovative technology with expert craftsmanship. Our philosophy of supplying our customers with quality products at affordable prices has positioned us as an internationally recognized leader in the industry.

YOUR LOCAL BALLANTINE DEALER:



© 2018 U.S. Tsubaki Power Transmission, LLC. All Rights Reserved. | 10/19 Rev. F01000

BALLANTINE

PREMIUM FORESTRY TEETH



BALLANTINE
ballantineinc.com

BALLANTINE
ballantineinc.com