



BADGER TEETH

RELENTLESS.

BALLANTINE
BALLANTINEINC.COM



STANDARD STUMP CUTTERS

2911-1

2913-1

2911-2

2908-1



2908-2

FEATURES

- ▶ Ballantine offers other styles of teeth to fit your lower horsepower stump cutters.
- ▶ ½" square cutters standard for many stump cutters.
- ▶ Counterbored and threaded pockets will accept angled or straight cutters.

HARDWARE (compatible with all models)

SC134 5/8"-18 × 1-3/4" Allen Head Bolt for 3/8" Wheels

SC200 5/8"-18 × 2" Allen Head Bolt for 1/2" Wheels

SC214 5/8"-18 × 2-1/4" Allen Head Bolt for 3/4" Wheels

SC212 5/8"-18 × 2-1/2" Allen Head Bolt for 1" Wheels



TEETH

FEATURES

- ▶ Indexable stump cutter tooth allowing three times the life from the same tooth.
- ▶ Threaded shank for ease of rotation and replacement.
- ▶ Constructed using premium virgin carbide.
- ▶ Concave carbide face to better utilize the horsepower of your machine.
- ▶ Compatible with Greenteeth holders using provided spacer.
- ▶ Fits most major brands of stump cutters.

PART NUMBER	CARBIDE DIAMETER	SHANK SIZE	RECOMMENDED MACHINE SIZE
B500GT	11/16"	5/16"	Up to 16HP
B700GT	13/16"	3/8"	16HP-40HP



BADGER TEETH

HOLDERS

B500LH

B700LH



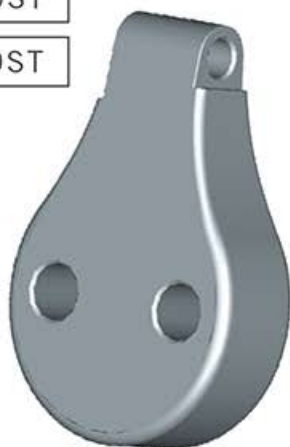
B500RH

B700RH



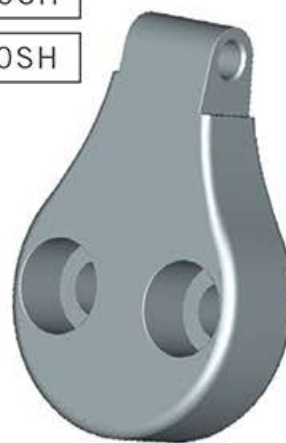
B500ST

B700ST



B500SH

B700SH



FEATURES

- ▶ Premium forged body.
- ▶ Angled and straight holders for complete coverage.
- ▶ Counter bored or threaded to allow all bolts to be inserted and tightened from one side.

MODEL COMPATIBILITY

Altec/Woods:	Stump cutter attachment
Bandit:	2000, 2100, 2150XP, 2250XP, 2450XP, HB19, HB19Sp, HB19X, HB20, HB20X
Barreto:	SG30, 13SGH, 16SGB
Beeline:	Sunrise Concept
Bluebird:	SG1114, SG1314
Bobcat:	SG30, Stump Cutter Attachments
Carlton:	900H, 2000, SP2000, 2300, 2400-4, 2500, 2500-4, 2700-4, 4012, SP4012, SP5014TRX
Dosko:	200, 337, 357, 620, 691
Hawk:	13HP, 20HP
Husqvarna:	SG1314
Jo Beau:	B13-90, B24-100, B31-110
Powertek:	12-13P, 16-20P, 16-20SP
Promark:	16D, 16SP, R18
QuickAttach:	Stump Grinder Attachment
Ram:	Model 20
Rayco:	RG13, RG20, RG25HD, RG27 Super Jr., RG35 Super Jr., RG37 Super Jr., RG40 Super Jr., RG45 Super Jr., RG1620 Jr., RG1625 Super Jr., RG1631 Super Jr., RG1635 Super Jr., RG1635 Tow Behind, RG1635 Trac Jr., RG1642 Tow Behind
Terra:	SG13
Top Notch:	38 Special
Toro:	Dingo Attachment, SGR-13, STX-26, STX-38
Ventrac:	Stump Grinder Attachment
Vermeer:	SC186, SC206, SC222, SC252, SC292, SC30TX, SC352, SC362, SC372, SC630A Tow Behind, SC630B Tow Behind

BALLANTINE

BALLANTINEINC.COM

Headquartered in Anoka, Minnesota, Ballantine has been manufacturing superior wear parts since 1959 and combines innovative technology with expert craftsmanship. Our philosophy of supplying our customers with quality products at affordable prices has positioned us as an internationally recognized leader in the industry.



840 McKinley Street Anoka, MN 55303

YOUR LOCAL BALLANTINE DEALER:



(800) 328-2424

PARTS@BALLANTINEINC.COM

All manufacturers' names, numbers, and descriptions are for reference purpose only, and it is not implied that any items listed are products of the manufacturers.

© 2019 U.S. Tsubaki Power Transmission, LLC.
All Rights Reserved. | Z03000 Rev. 9/19